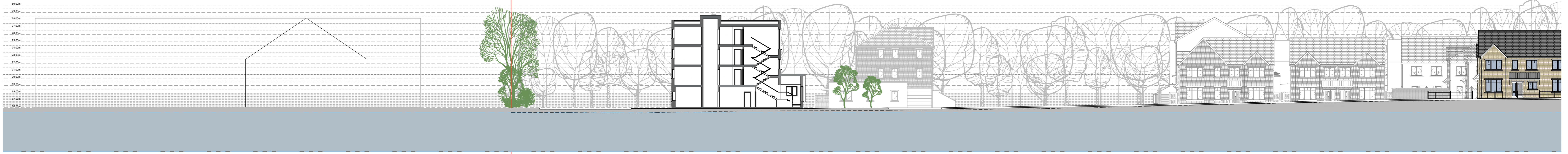




Contiguous Elevation C5 1:500



Contiguous Elevation C5 (Part A) 1:200



Contiguous Elevation C5 (Part B) 1:200



Contiguous Elevation C5 (Part C) 1:200



Contiguous Elevation C7 1:500



Contiguous Elevation C7 (Part A) 1:200



Contiguous Elevation C7 (Part B) 1:200



Key Plan

GENERAL NOTES

The Developer/Contractor/Builder is to ensure that the building under construction complies with the 2010 Building Regulations in respect of all trades involved in the construction of this development.

The Developer/Contractor/Builder should notify BCA of any intended deviations from these plans prior to commencement of development.

All Site Development works to be carried out in accordance with:

- *Recommendations for Site Development Works for Housing Areas' Dept. of Environment.

Contractors must verify all dimensions at the job before commencing any work. No working dimensions to be scaled. This drawing is for the purpose of planning only. Dimensions to blockwork only.

Date	Rev.
17-10-19	A - Revised for updated proposal

Client: Westar Investments Ltd.

Job: Clane KDA1 SHD

Location: Lands at Captoo & Abbeylands, Clane, Co. Kildare

Drawing Title: Contiguous Site Section/Elevation Sections C5 & C7

BCA brian connolly associates
CONSULTING ENGINEERS

BSc Eng. MSc, DIC, C.Eng. MBE
The Studio, "Wood's Way", Omeau, Co. Kildare. T: 046 882211 F: 046 880403
e: bcassoc@eircom.net

Planning - SHD 02c

job no	18002
date	16.11.18
scale	1:500, 1:200
drawn by	David Casey
cad ref no	-
planning ref no	-
file ref no	-
drawing no	18002-332A